

Operating Instructions

— Air Hose Reel

— SAR 8/10 SL

— SAR 8/18 SL

— SAR 9.5/15 PRO



SAR 8/10 SL



SAR 9.5/15 PRO

SAR-SERIES

Imprint

Product identification

Air Hose Reel	Item number
SAR 8/10 SL	2105840
SAR 8/18 SL	2105842
SAR 9.5/15 PRO	2105845

Manufacturer

AIRCRAFT
Kompressorenbau und Maschinenhandel GmbH
Gewerbestraße Ost 6
A-4921 Hohenzell

Phone: 0043 (0) 7752 70 929 - 0
Fax: 0043 (0) 7752 70 929 - 99

E-Mail: info@aircraft.at
Internet: www.aircraft.at

Sales Germany

Stürmer Maschinen GmbH
Dr.-Robert-Pfleger-Straße 26
D-96103 Hallstadt/Bamberg

Fax: 0049 (0) 951 - 96555-55
E-Mail: info@aircraft-kompressoren.de
Internet: www.aircraft-kompressoren.com

Indications regarding to operating instructions

Genuine operating instructions
Edition: 14.12.2020
Version: 1.01
Language: English
Author: ES

Indications regarding to copyright

Copyright © 2020 AIRCRAFT Kompressorenbau und Maschinenhandel GmbH, Hohenzell, Austria.
The contents of these operating instructions is the sole property of the company AIRCRAFT Kompressorenbau und Maschinenhandel GmbH.

Passing on as well a copying of this dokumen, the use and distribution of this document, the use and distribution of its content are prohibited if not explicitly permitted.

Contraventions are liable to comansation.

Subject to technical modifications and error.

Content

1 Introduction	3
1.1 Copyright	3
1.2 Customer service	3
1.3 Limitation of liability	3
2 Safety	3
2.1 Symbol explanation	3
2.2 Personal protective equipment	4
2.3 General safety instructions	4
3 Intended Use	4
4 Technical Data	5
4.1 Type plate	5
5 Transport, packaging, storage	5
5.1 Delivery	5
5.2 Packaging	5
5.3 Storage	5
6 Assembly	6
7 Description of device	7
8 Operation	7
9 Care and maintenance	8
10 Disposal, recycling of old equipment	8
10.1 Decommission	8
10.2 Disposal	8
11 Spare parts	8
11.1 Spare parts order	8
11.2 Spare parts drawings	9
12 EU Declaration of conformity	11

1 Introduction

You have made a good choice by purchasing the air hose reel made by AIRCRAFT.

Read the operating instructions thoroughly before commissioning and keep them in a safe place.

They will inform you about the proper commissioning, the intended use as well as the safe and efficient operation and maintenance of your device.

The operating instructions are part of the device. Always keep this operating manual at the place of use of the air hose reel. In addition, observe the local accident prevention regulations and general safety regulations for the area of application of the air hose reel.

1.1 Copyright

The contents of this instruction manual are protected by copyright. Their use is permitted within the scope of using the device. Any other use is not permitted without the written consent of the manufacturer.

We apply for trademark, patent and design rights to protect our products, provided this is possible in individual cases. We emphatically oppose any infringement of our intellectual property.

1.2 Customer service

Please contact your dealer if you have questions on your device or you need technical advice. They will help you with specialist information and expert advice.

Austria:

AIRCRAFT Kompressorenbau und Maschinenhandel
GmbH
Gewerbestraße Ost 6
A-4921 Hohenzell

Phone: 0043 (0) 7752 70 929-0
Fax: 0043 (0) 7752 70 929-99

E-Mail: info@aircraft.at
Internet: www.aircraft.at

Germany:

Stürmer Maschinen GmbH
Dr.-Robert-Pfleger-Str. 26
D-96103 Hallstadt

Repair-Service:

Fax: 0049 (0) 951 96555-111
E-Mail: service@stuermer-maschinen.de

Spare parts orders:

Fax: 0049 (0) 951 96555-119
E-Mail: ersatzteile@stuermer-maschinen.de

We are always interested in valuable experience and knowledge gained from using the application, which then could be shared and be valuable to develop our products even further

1.3 Limitation of liability

All information and notes in these operating instructions were summarised taking the applicable standards and rules, the state-of-the-art and our longterm knowledge and experiences into consideration.

In the following cases the manufacturer is not liable for damages:

- Non-observance of the operating instructions,
- inappropriate use,
- Use of untrained staff,
- unauthorised modifications,
- technical changes,
- Use of not allowed spare parts.

The actual scope of delivery may deviate from the explanations and presentations described here in case of special models, when using additional ordering options or due to latest technical modifications.

The obligations agreed in the delivery contract, the general terms and conditions as well as the delivery conditions of the manufacturer and the legal regulations at the time of the conclusion of the contract are applicable.

2 Safety

This chapter provides an overview of all important safety packages for the protection of persons and for safe and trouble-free operation. Further task-related safety instructions are contained in the sections on the individual life phases.

2.1 Symbol explanation

Safety instructions

Safety instructions in this manual are identified by symbols. The safety instructions are introduced by signal words which express the extent of the hazard.



ATTENTION!

This combination of symbol and signal words indicates a possibly dangerous situation which may lead to property and environmental damages if they are not avoided.



DANGER!

This combination of symbol and signal words indicates an imminently dangerous situation which may lead to death or severe injury if not avoided.

**WARNING!**

This combination of symbol and signal words indicates a potentially dangerous situation which may lead to death or severe injury if not avoided.

**CAUTION!**

This combination of symbol and signal words indicates a potentially dangerous situation which may lead to slight or minor injury if not avoided.

**NOTE!**

This combination of symbol and signal words indicates a potentially dangerous situation which may lead to material or environmental damage if not avoided.

Tips and recommendations**Tips and recommendations**

This symbol highlights useful tips and recommendations as well as information for an efficient and trouble-free operation.

It is necessary to observe the safety notes written in these operating instructions in order to reduce the risk of personal injuries and damages to property.

2.2 Personal protective equipment

The personal protective equipment is intended to protect persons from adverse effects on safety and health at work. The personnel must wear personal protective equipment during the various work on and with the device, which is separately indicated in the individual sections of this manual.

Personal protective equipment is explained in the following section:

**Protective gloves**

The protective gloves protect the hands from sharp-edged components as well as from friction, abrasions or deeper injuries.

**Safety boots**

The safety shoes protect the feet against bruising, falling parts and slipping out onto the surface.

**Protective clothing**

The protective clothing is tight-fitting clothing with low tear resistance.

2.3 General safety instructions

- Before rolling up the hose and before cleaning and maintenance work, the hose must be depressurized and disconnected from the compressed air source.
- Always keep the air hose reel and its working environment clean. Provide adequate lighting.
- Keep children and people not familiar with the air hose reel away from their working environment.
- Before each use, make sure that no parts of the air hose reel are damaged. Damaged parts must be replaced immediately to prevent hazards.

**ATTENTION!**

Do not operate the air hose reel in hazardous areas!

3 Intended Use

The device is used exclusively for unwinding and rewinding the pressure hose and for connecting it to the compressor connection and to suitable consumers. The SAR 8/10 SL and SAR 8/18 SL models are equipped with an automatic return break that slows down the cable rewind.

Intended use also includes compliance with all the information in these instructions. Any use beyond the intended use or any other use is considered misuse.

**WARNING!****Danger in case of misuse!**

Misuse of the device can lead to dangerous situations.

- Only operate the device in the power range specified in the technical data.
- Never bypass or disable the safety devices.
- Only operate the device in a technically perfect condition.

For structural and technical changes to the device, the company Stürmer Maschinen GmbH assumes no liability.

Claims of any kind due to damage due to improper use are excluded.

4 Technical Data

Technical Data	SAR 8/10 SL	SAR 8/18 SL
Hose length	10 m	18 m
Hose inner diameter	8 mm	
Hose outer diameter	12 mm	
Hose material	PU Mesh	
Connecting thread diameter	1/4"	
Connection thread type	External thread	
Length (product) approx.	380 mm	
Width/depth (product) approx.	300 mm	
Height (product) approx.	200 mm	
Weight approx.	5,53 kg	6,8 kg
Max. operating pressure	15 bar	

Technical Data	SAR 9.5/15 PRO
Hose length	15 m
Hose inner diameter	9,5 mm
Hose outer diameter	13 mm
Hose material	PU Mesh
Connecting thread diameter	1/4"
Connection thread type	External thread
Length (product) approx.	320 mm
Width/depth (product) approx.	140 mm
Height (product) approx.	380 mm
Weight approx.	12 kg
Max. operating pressure	15 bar

4.1 Type plate

Schlauchaufroller
Air hose reel

CE

Typ Type	SAR 8/18 SL	Serien-Nr. Serial no.	
Artikel-Nr. Item no.	2105842	Baujahr Year of manufacture	Monat/Jahr month/year
Gewicht Weight	6,8 kg	Schlauchlänge Length of hose	18 m

aircraft
www.aircraft.at

Aircraft Kompressorenbau GmbH
Gewerbestr. Ost 6, 4921 Hohenzell
Österreich / Austria

Fig. 1: Type plate

5 Transport, packaging, storage

5.1 Delivery

Check the unit for visible transport damage after delivery. If there is any damage to the unit, report it immediately to the transport company or the dealer.

5.2 Packaging

All packaging materials and packaging aids used in the compressor are recyclable and must always be recycled.

Crush the packaging material made of cardboard and supply it to the waste paper collection.

The foils are made of polyethylene (PE) and the upholstery parts made of polystyrene (PS). These substances must be handed over to a recycling center or to the responsible disposal company.

5.3 Storage

Store the device thoroughly cleaned in a dry, clean and frost-free environment.

6 Assembly

The installation location must be near a source of compressed air!

The air hose reel must be mounted on a stand, beam or sturdy support.

When choosing an installation location, please ensure that the surface is stable and that the mounting material can support the weight of the air hose reel and the load from use.

Step 1: Select a suitable position on the wall (Fig. 2).

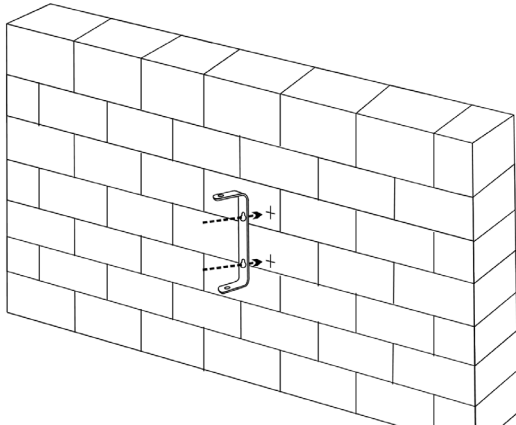


Fig. 2: Assembly

Step 2: Mark and drill 2 holes to correspond with the holes in the wall bracket (Fig. 3).

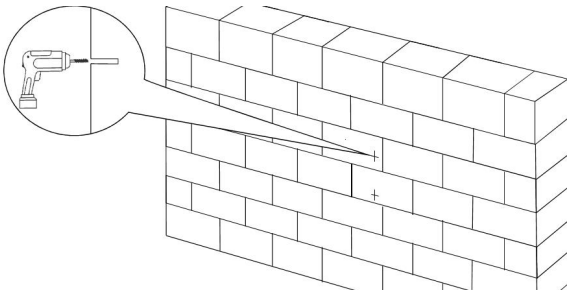


Fig. 3: Assembly

Step 3: Secure the bracket to the support with the screws (Fig. 4).

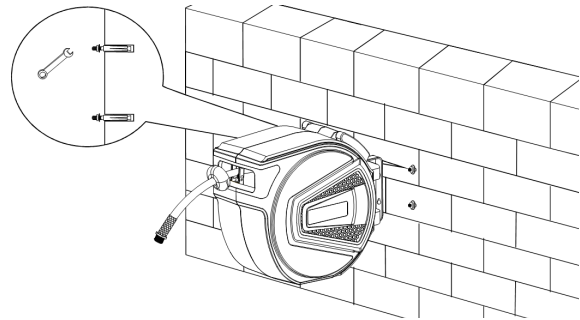


Fig. 4: Assembly

Step 4: Position the holes on the air hose reel housing in line with the hole in the bracket. Insert the screws with the appropriate diameter into the holes in the bracket and in the reel housing (Fig. 5).



ATTENTION!

Make sure that the hose is not clamped or damaged when using the device.

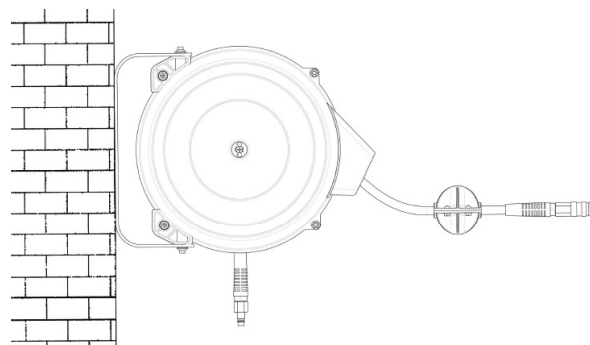


Fig. 5: Assembly

7 Description of device

Illustrations in these operating instructions are for basic understanding and may differ from the actual design of the device.

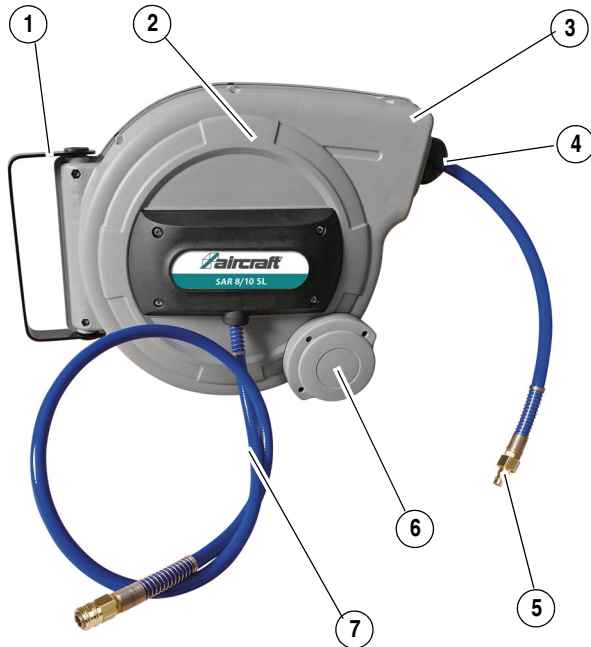


Fig. 6: SAR 8/10 SL, SAR 8/18 SL

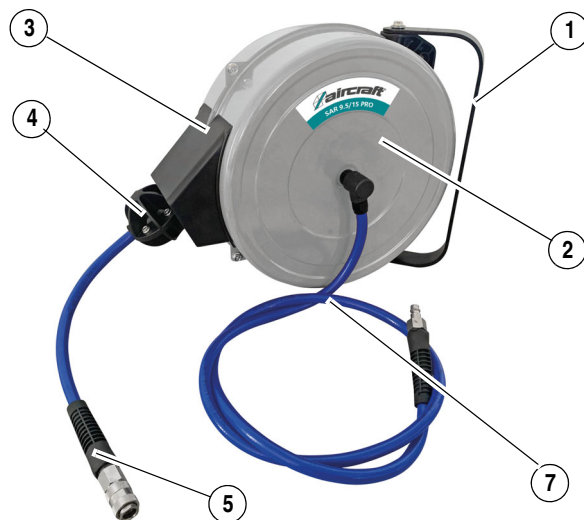


Fig. 7: SAR 9.5/15 PRO

- 1 Bracket
- 2 Hose reel
- 3 Guide arm
- 4 Protective cap (SAR 8/10 SL, SAR 8/18 SL)
Hose stop ring (SAR 9.5/15 PRO)
- 5 Coupling piece
- 6 Return break (only SAR 8/10 SL, SAR 8/18 SL)
- 7 Supply hose

8 Operation



ATTENTION!

- Only operate the device when it is in perfect technical condition.
- The specified maximum pressure must not be exceeded.

Roll out the hose:

The product is equipped with a cable lock that locks the cable length in almost any desired position.

Pull the hose out of the hose reel to the desired length. Release the pull. The hose is pushed back briefly until it is held by the automatic hose return.

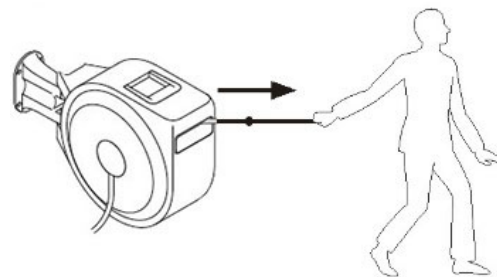


Fig. 8: Operation

Roll up the hose:

To activate the automatic hose rewind, pull the hose briefly and firmly. Let the hose run back into the hose reel (Fig. 9).

The air hose reel SAR 8/10 SL and SAR 8/18 SL are equipped with an automatic return brake that slows down the hose retraction.

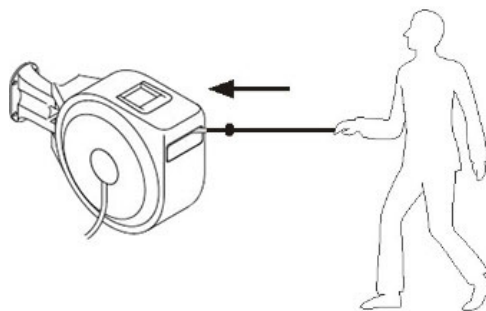


Fig. 9: Operation



DANGER!

- Always hold the hose until it is fully retracted into the hose reel! Letting go of the hose can lead to injuries.
- Always retract the hose only when it is not under pressure.
- Always switch off the compressor.

9 Care and maintenance



DANGER!

All work on pneumatic systems may only be carried out by skilled personnel who have been trained for this purpose and are familiar with the associated dangers.

All plastic parts and painted surfaces should be cleaned with a soft, damp cloth and some neutral cleaner.

To ensure that the hose rolls up evenly, spray the hose regularly with silicone spray after cleaning.

Check the mounting parts regularly for stability and damage.

After maintenance, repair and cleaning work, check that all covers and protective devices have been properly installed again.

10 Disposal, recycling of old equipment

In the interest of the environment, care must be taken to ensure that all components of the device are disposed of in the proper and authorized way.

10.1 Decommission

Disused devices must be taken out of operation immediately and professionally in order to avoid later misuse and danger to the environment or persons.

Step 1: If necessary, disassemble the equipment into handleable and recyclable assemblies and components.

Step 2: Dispose of the equipment components and operating materials in the appropriate disposal channels.

10.2 Disposal

The devices contain a large number of recyclable materials and environmentally harmful components.

These components must be disposed of separately and properly. In case of doubt, contact the municipal waste disposal service.

If necessary, use the services of a specialized waste disposal company for processing.

11 Spare parts



DANGER!

Risk of injury caused by the use of incorrect spare parts!

The use of incorrect or faulty spare parts may cause risks for operating staff and damage as well as malfunctions.

- Exclusively genuine spare parts made by the manufacturer or spare parts authorised by the manufacturer shall be used.
- Always contact the manufacturer if you are unsure.



Tips and recommendation

The manufacturer warranty shall be rendered void in the event of a use of unauthorised spare parts.

11.1 Spare parts order

The spare parts may be purchased with the authorised dealer or directly with the manufacturer. Please find the corresponding contact data in Chapter 1.2 Customer service.

Indicate the following basic information for requests or orders of spare parts:

- Type of device
- Item No.
- Position No.
- Year of construction:
- Quantity
- Required mode of dispatch (mail, freight, sea, air, express)
- Address of dispatch

Spare part orders which do not include the above indications may not be taken into consideration. If the indications regarding the mode of dispatch are missing, the product is dispatched at the discretion of the supplier.

Information on the device type, article number and year of construction can be found on the nameplate, which is attached to the device.

Example

The bracket for the air hose reel SAR 8/10 SL must be ordered. The bracket has in the spare parts drawing the number 1.

When ordering spare parts, send a copy of the spare parts drawing with marked component (bracket) and marked position number (1) to the authorized dealer or to the spare parts department and provide the following information:

- Type of device: **Air Hose Reel SAR 8/10 SL**
- Item number: **2105840**
- Position number: **1**

11.2 Spare parts drawings

The following drawings should help you to identify necessary spare parts in case of service.

Spare parts drawing SAR 8/10 SL and SAR 8/18 SL

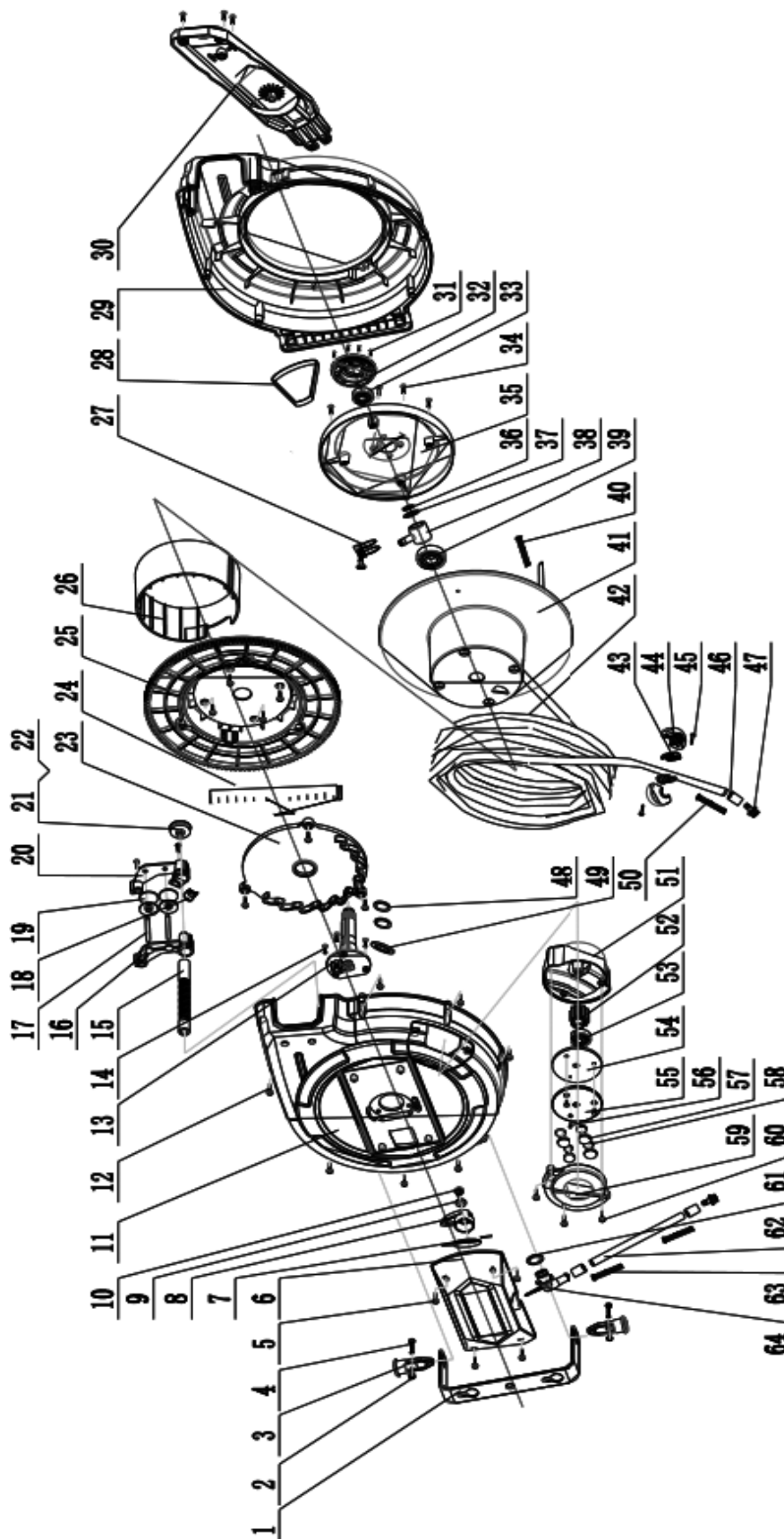


Fig. 10: Spare parts drawing SAR 8/10 SL and SAR 8/18 SL

Spare parts drawing SAR 9.5/15 PRO

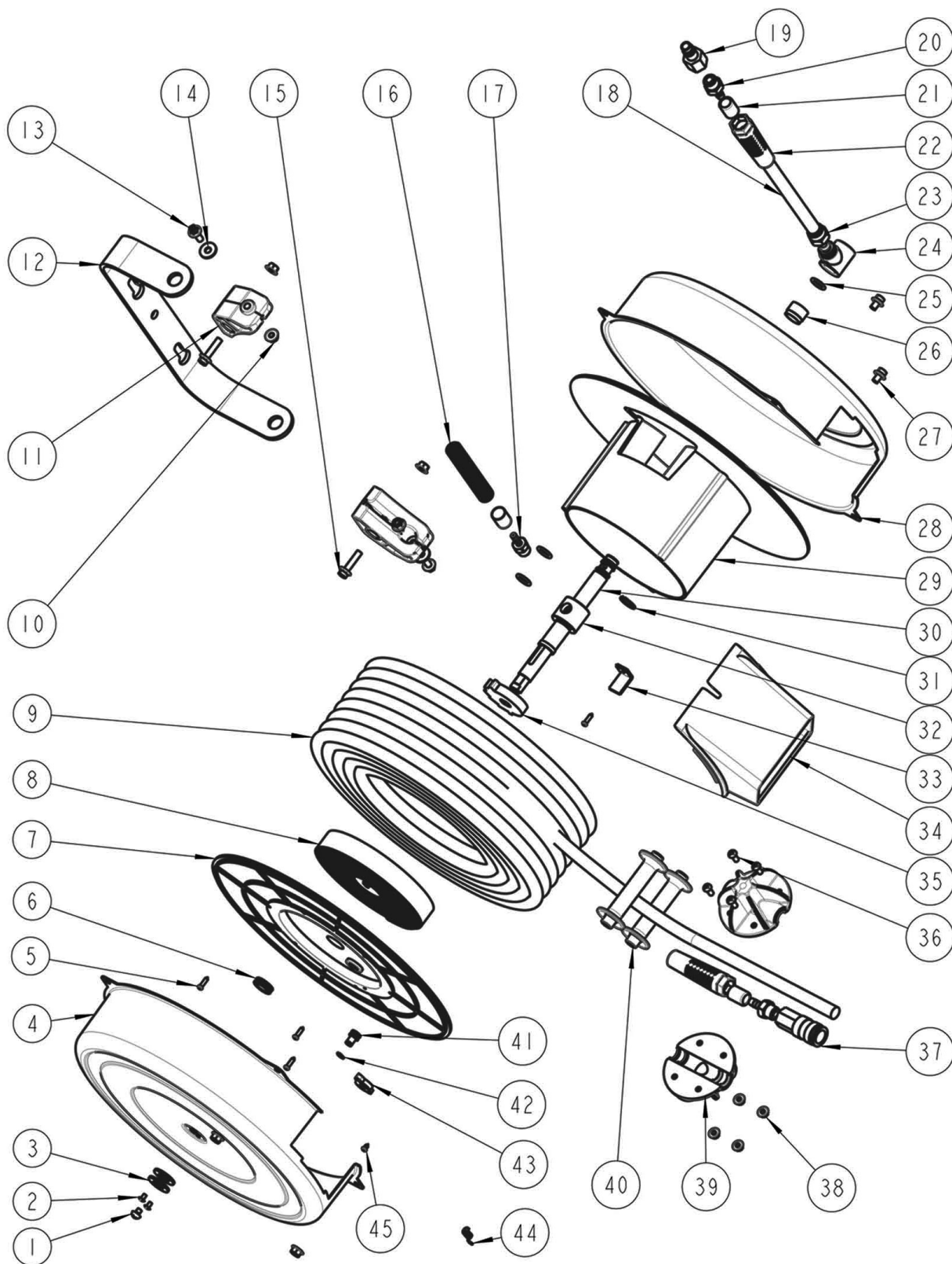


Fig. 11: Spare parts drawing SAR 9.5/15 PRO

12 EU Declaration of conformity

Manufacturer/distributing company: AIRCRAFT Kompressorenbau und Maschinenhandel GmbH
Gewerbestraße Ost 6
A-4921 Hohenzell

hereby declares that the following product

Product group: AIRCRAFT® Drucklufttechnik

Type of machine: Air Hose Reel

Designation*: **Item number:**

☐ SAR 8/10 SL 2105840

☐ SAR 8/18 SL 2105842

☐ SAR 9.5/15 PRO 2105845

Serial number*: _____

Year of manufacture*: 20_____

* fill these fields according to the information on the type plate

complies with the relevant fundamental health and safety requirements specified in the Pressure Equipment Directive 2014/68/EU by design and construction, as well as in the version placed on the market by us.

Applicable EU regulations: EGV 1907/2006 REACH Regulation

The following harmonized standards were applied:

DIN EN ISO 12100:2011-03 Safety of machinery - General principles for design -
Risk assessment and risk reduction

Responsible for documentation: Klaus Hütter, AIRCRAFT Kompressorenbau und Maschinenhandel GmbH,
Gewerbestraße Ost 6, A-4921 Hohenzell

Hohenzell 14.12.2020

Hallstadt, 14.12.2020



Klaus Hütter
Manager



Kilian Stürmer
Manager



